

# Rumboldswyke Church of England Primary School

Part of the Bishop Luffa Learning Partnership

'Love life, love learning, love God's world'

[office@rumboldswyke.org.uk](mailto:office@rumboldswyke.org.uk) 01243 782368

Head of School - Mrs Lisa Harris [head@rumboldswyke.org.uk](mailto:head@rumboldswyke.org.uk)



5<sup>th</sup> September 2022

Dearest Rumboldswyke families,

An exceptionally warm welcome to the start of the new school year. I do hope you had an enjoyable summer and you were able to spend time with loved ones, enjoying the glorious weather we were blessed with.

We would like to extend a very warm welcome to our new children and their families; we are very pleased you have joined the Rumboldswyke team and we look forward to working with you all.



To our familiar faces, welcome back! It was lovely to see them arriving with beaming faces in their smart new uniforms and shiny shoes this morning. Many of them have grown lots over the holidays and look ready to begin their next academic year.

Welcome too to the new members of staff who have joined our rapidly growing team: Miss Clark – Year 3 and 4 teacher, Mrs Gilbert – KS1 and KS2 teacher, Mrs Lodge – Teaching Assistant in Yellow Class, Miss Pattinson – Teaching Assistant in Red Class, and Miss

Harvey – Midday Meals Supervisor. A special mention to Mrs Collins-Ballend who is beginning a new role as Executive SENDCO of the Bishop Luffa Learning Partnership. Mrs Collins-Ballend has huge experience as SENDCO of Bishop Luffa for 15 years. She will be based at Rumboldswyke and is looking forward to working with the school and the parents of children with SEND. We hope they soon feel settled in their roles as part of the Rumboldswyke family.

## **School Day**

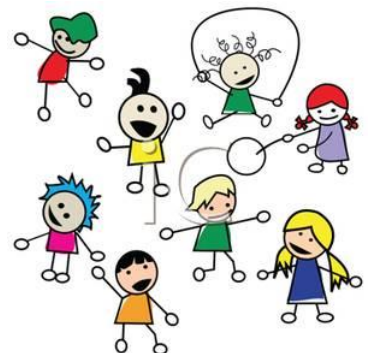
Due to our growing number of children, there are a number of changes to the school day.

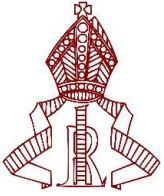
Remember the gates open at 8:40 and the school day starts at 8:45. **All** children should be in school for this time. It is important that the children are at school on time every day to prevent disruption and maximise learning for all.

Children in Reception and KS1 (Blue and Yellow Class) have morning playtime between 10-10:15.

Worship for the whole school is between 10:15-10:30

Children in KS2 (Red Class) have morning playtime between 10:30-10:45.





# Rumboldswyke Church of England Primary School

*Part of the Bishop Luffa Learning Partnership*

‘Love life, love learning, love God’s world’

[office@rumboldswyke.org.uk](mailto:office@rumboldswyke.org.uk) 01243 782368

Head of School - Mrs Lisa Harris [head@rumboldswyke.org.uk](mailto:head@rumboldswyke.org.uk)



The lunch hour is between 12:00-13:00. All children will eat lunch in the hall which is in two sittings.

Reception and KS1 eat lunch between 12:00-12:30.

KS2 eat lunch between 12:35-13:00.

We are aware that some children may need longer than 25-30 minutes to eat their lunch at first. We have plans to facilitate this.

The school day ends at 15:15pm.

## **Meet the Teacher**

As in previous years, we will hold Meet the Teacher meetings early in the Autumn Term for children in Y1, 2, 3, and 4. We strongly encourage parents to attend these if possible. This is an opportunity for you to meet your child’s new teacher, find out the class routines and what is coming up in the school year, and most importantly, ways to support your child’s learning.

Yellow Class: 14:45 on Monday 12<sup>th</sup> September

Red Class 14:45 on Tuesday 13<sup>th</sup> September

Blue Class parents will be invited into school for a Stay and Play session on Friday 14<sup>th</sup> October at 9:00.

## **Forest School**

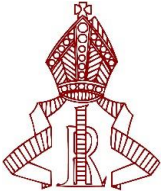
Due to our growing team, we are delighted to tell you that we will be able to offer half a term of Woodland Activities for each class. The sessions will take place on Tuesday afternoons for:

- Yellow Class between October half term and Othe Christmas holidays
- Red Class between February half term and the Easter holidays
- Blue Class between May half term and the Summer holidays.

Further information will follow from Mrs Lambourne nearer the time.

You will receive another newsletter at the end of this week where I will be sharing the school development priorities for the year and ways you can support us with them. If there are any whole-school specific questions you would like answering in that newsletter, please do drop me an email: [head@rumboldswyke.org.uk](mailto:head@rumboldswyke.org.uk)





# Rumboldswyke Church of England Primary School

Part of the Bishop Luffa Learning Partnership

'Love life, love learning, love God's world'

[office@rumboldswyke.org.uk](mailto:office@rumboldswyke.org.uk) 01243 782368

Head of School - Mrs Lisa Harris [head@rumboldswyke.org.uk](mailto:head@rumboldswyke.org.uk)



## **Term Dates**

The new term dates are detailed below, please be aware there is one more INSET day to be set.

### **Autumn Term 2022**

Thursday 1st September to Friday 16th December  
Half Term – Monday 24th October to Friday 28th October

*INSET day – Thursday 1st and Friday 2nd September & Monday 31st October – no school for children.*

### **Spring Term 2023**

Tuesday 3rd January to Friday 31st March

Half Term – Monday 13th February to Friday 17th February

*INSET day – Monday 20th February – no school for children.*

### **Summer Term 2023**

Monday 17th April to Friday 21st July

Half Term – Monday 29th May to Friday 2nd June

With warmest wishes,

Lisa Harris

**WELCOME BACK  
TO SCHOOL!**